

2012

Student Experience 11B: Mammoth Hot Springs Microbe Wheel

Ana K. Houseal

University of Wyoming, ahouseal@uwyo.edu

Follow this and additional works at: http://repository.uwyo.edu/starrs_curriculum

 Part of the [Curriculum and Instruction Commons](#), [Geology Commons](#), and the [Science and Mathematics Education Commons](#)

Recommended Citation

Houseal, Ana K., "Student Experience 11B: Mammoth Hot Springs Microbe Wheel" (2012). *Expedition: Yellowstone! STaRRS Curriculum Materials*. Book 20.

http://repository.uwyo.edu/starrs_curriculum/20

This Book is brought to you for free and open access by the Science and Mathematics Teaching Center at Wyoming Scholars Repository. It has been accepted for inclusion in Expedition: Yellowstone! STaRRS Curriculum Materials by an authorized administrator of Wyoming Scholars Repository. For more information, please contact scholcom@uwyo.edu.

1^a Wheel

Directions:

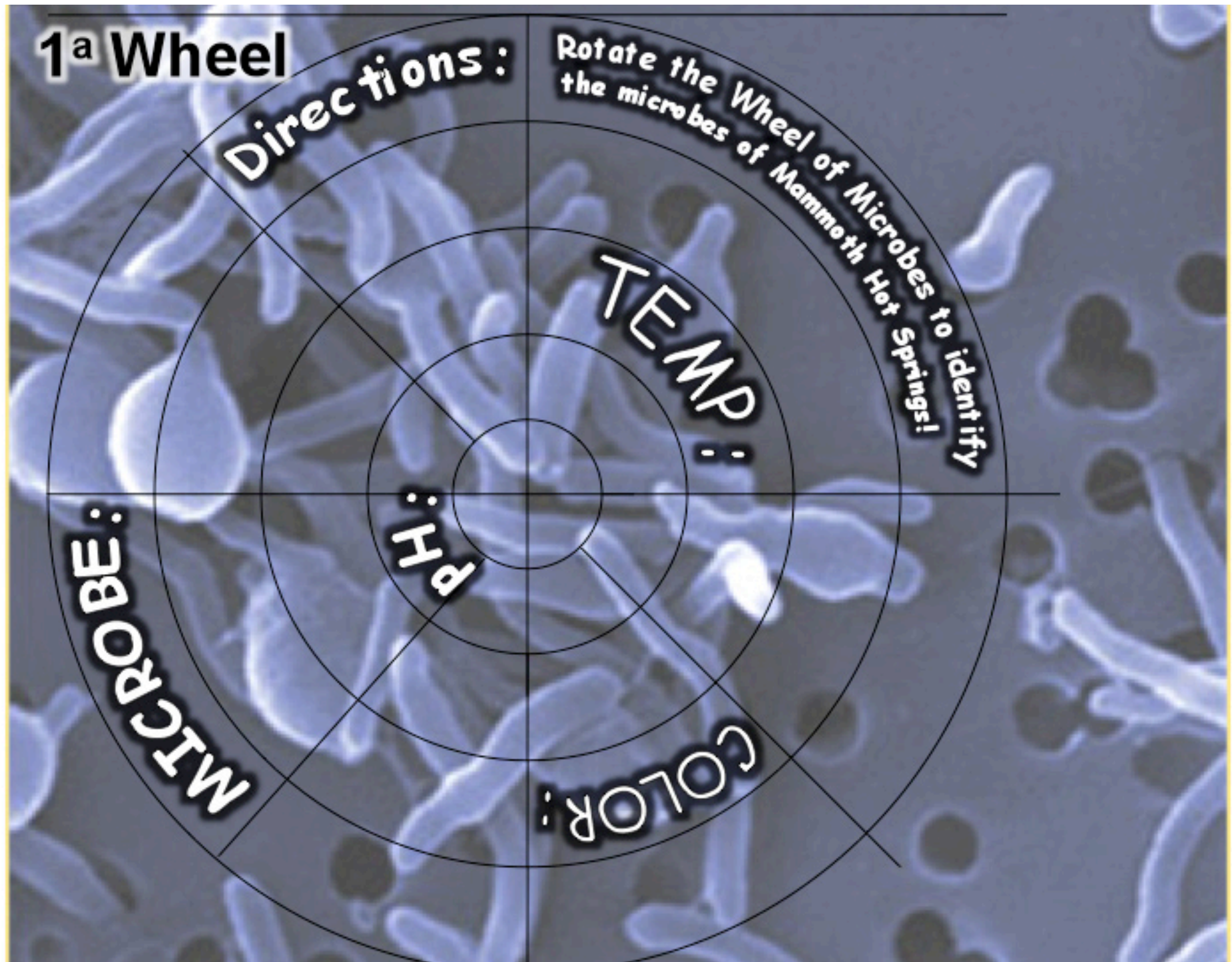
Rotate the Wheel of Microbes to identify the microbes of Mammoth Hot Springs!

TEMP!

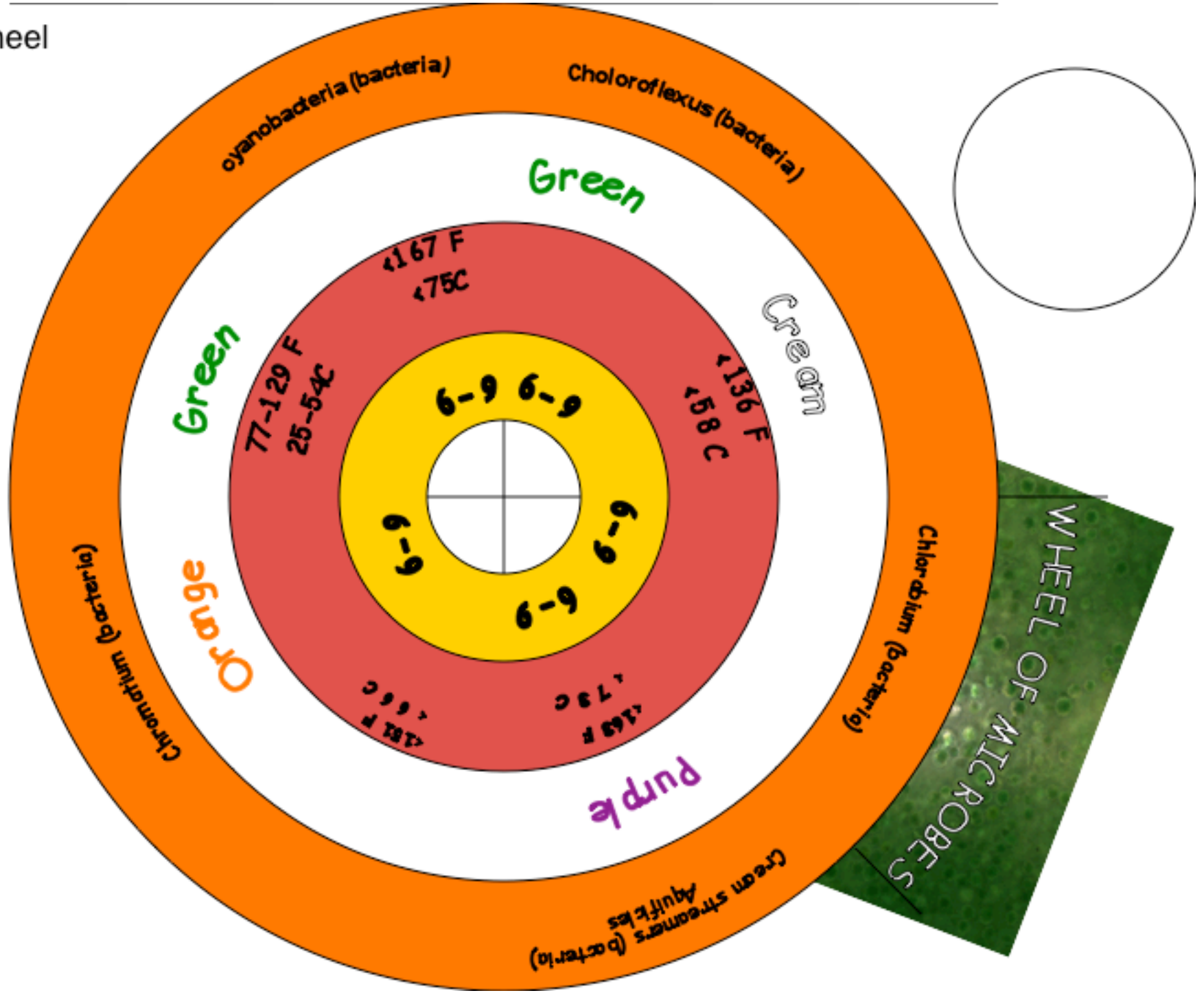
pH:

COLOR:

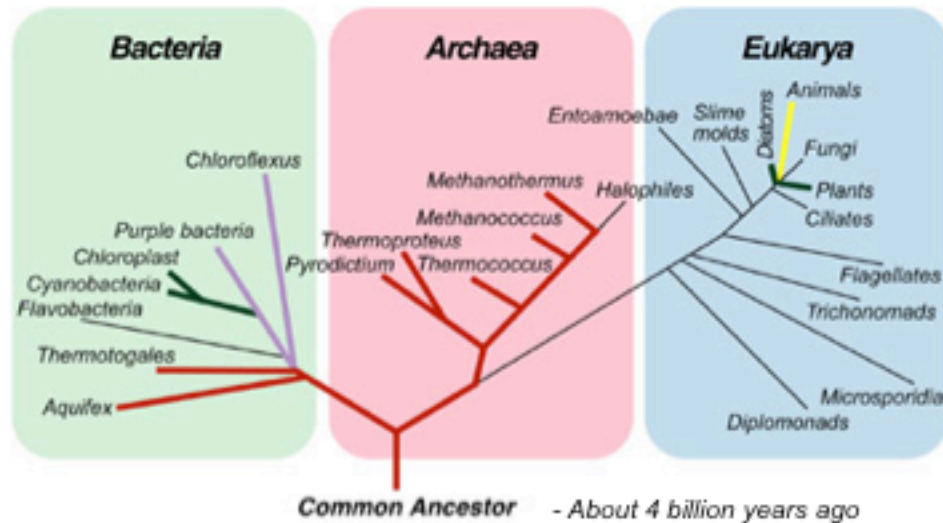
MICROBE:



4th Wheel



TREE OF LIFE



Minerals or Microbes?

The variety of colors you see in the hot spring pools may be due to the presence of minerals or microbes. How can you make a guess without using a microscope?

- Minerals tend to form around the edge of the pools, yet microbes grow out from the source of the pools and along runoff channels.
- Mineral deposits look crystalline or hard, whereas microbes look spongy, soft, or wavy.